

GeoMax GNSS

Zenith35 Pro Series Installation Guide



Version 2.10
English

Tablet of Contents

1	INTRODUCTION	3
2	GENERAL PREPARATION	4
2.1	Battery Charging.....	4
2.1.1	Zenith35 Pro Receiver	4
2.1.2	Field Controller	4
3	PREPARATION OF THE GNSS RECEIVER.....	5
3.1	Introduction GeoMax Zenith35 WebManager.....	5
3.2	Search your Zenith35 receiver.....	5
3.3	Connection to your PC	6
3.4	Start the GeoMax Z35WebManager.....	6
3.5	Change the language of the GeoMax Z35WebManager.....	7
3.6	Firmware upload	7
3.6.1	Checking the receiver firmware version	7
3.6.2	Retrieving latest firmware versions	8
3.6.3	Zenith35 Pro Firmware update	8
3.7	Changing the UHF radio settings.....	9
3.8	Installation of licences.....	10
3.9	Disconnecting from the PC.....	10
3.10	Connecting to the PC via USB.....	11
3.11	Connecting to the PC via RS232	11
4	PREPARATION OF THE HANDHELD.....	11
4.1	Setting up Windows Mobile	11
4.2	Connecting to the PC	12
4.3	Installation of GeoMax FieldGenius/ Layout Pro.....	12
4.4	Registration of FieldGenius/ Layout Pro.....	13
4.5	Connection to the GNSS receiver.....	15
5	EQUIPMENT SETUP	19
5.1	Rover setup	19
5.2	Base setup.....	20

1 INTRODUCTION

This guide provides complete step-by-step instructions for preparing the Zenith35 Pro GNSS series for measuring work. The instructions cover all the required installation tasks for the Zenith GNSS receiver, Zenius5 Field Controller and FieldGenius software.

Only the tasks required for the initial setup of a new Zenith35 Pro system are described in this document. For further information regarding the operation of the Zenith35 Pro components, please refer to the respective User Manuals.

The User Manual for the GNSS receiver and the Field Controllers are available from the GeoMax Partner Area.

2 GENERAL PREPARATION

2.1 BATTERY CHARGING

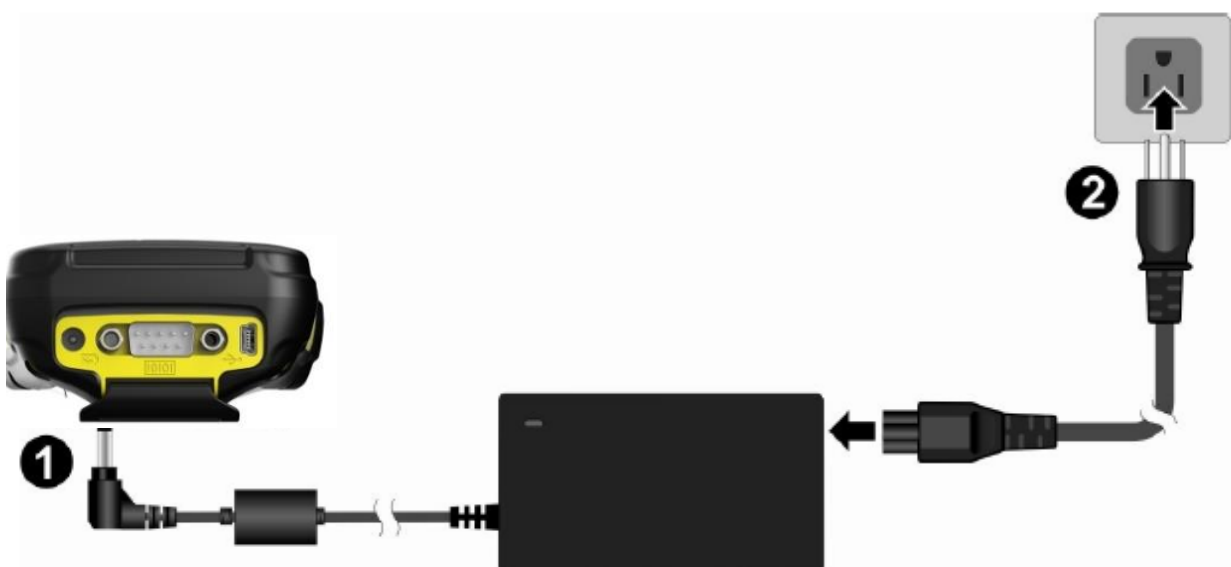
2.1.1 Zenith35 Pro Receiver

Before using the receiver, the included ZBA601 batteries should be charged. Insert a battery into the ZCH601 charger and plug the adapter into an AC supply. Do not disconnect from power until the indicator shows a constant green light, indicating that the battery is fully charged. Press the button on the battery itself to cross-check the power level. All four green lights should be illuminated and indicating the battery is fully charged.

2.1.2 Field Controller

The Field Controller is supplied in a cardboard box which includes the device, battery, charging adapter and EU power cable. A suitable AC power cable may need to be sourced locally to suit country specific plugs. All AC voltages are supported by the adapter.

Insert the supplied battery into the handheld's battery compartment. Charge the internal battery with the supplied adapter as shown below. While charging, the indicator on the front of the unit glows. Do not disconnect from power until the indicator glows green, indicating that the battery is fully charged.



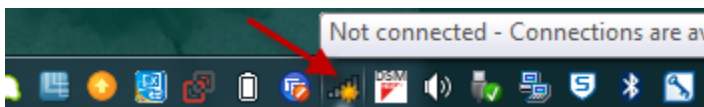
3 PREPARATION OF THE GNSS RECEIVER

3.1 INTRODUCTION GEOMAX ZENITH35 PRO WEBMANAGER

The GeoMax Z35WebManager (web application) is comparable to the conventional "GeoMax Assistant" that allows to configure and to modify multiple settings at the Zenith35 Pro receiver. Furthermore data can be downloaded or receiver, radio, Measurement Engine (ME) and/or GSM firmware can be uploaded.

3.2 SEARCH YOUR ZENITH35 PRO RECEIVER

Make sure that the wireless modem on your PC is turned on and you are able to search for available "WiFi connections".

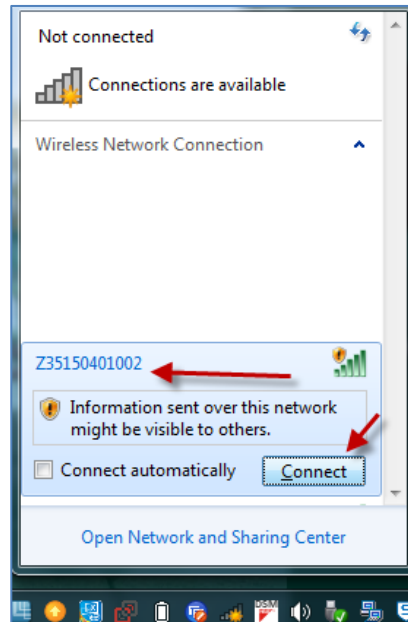


Now you can search the Zenith35 Pro WiFi (with your PC or mobile phone) which is corresponding to the serial number of the Zenith35 Pro.



3.3 CONNECTION TO YOUR PC

Once the serial number of the sensor is visible in the Wireless Network Connection list, click "Connect". The Zenith35 Pro and your PC will be connected.

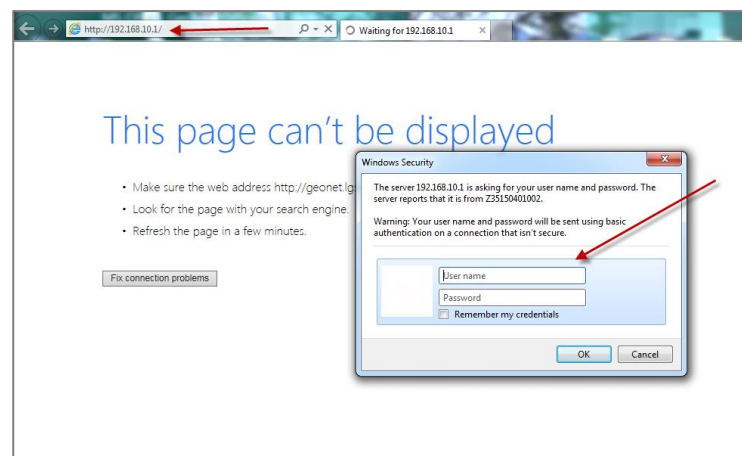


3.4 START THE GEOMAX Z35WEBMANAGER

As soon as you are connected to the receiver, start the web browser (e.g. Internet Explorer, Firefox, Chrome...) and insert the following IP address in your browser:

<http://192.168.10.1>

A login-window pops up.



The default values for the login are as follows:

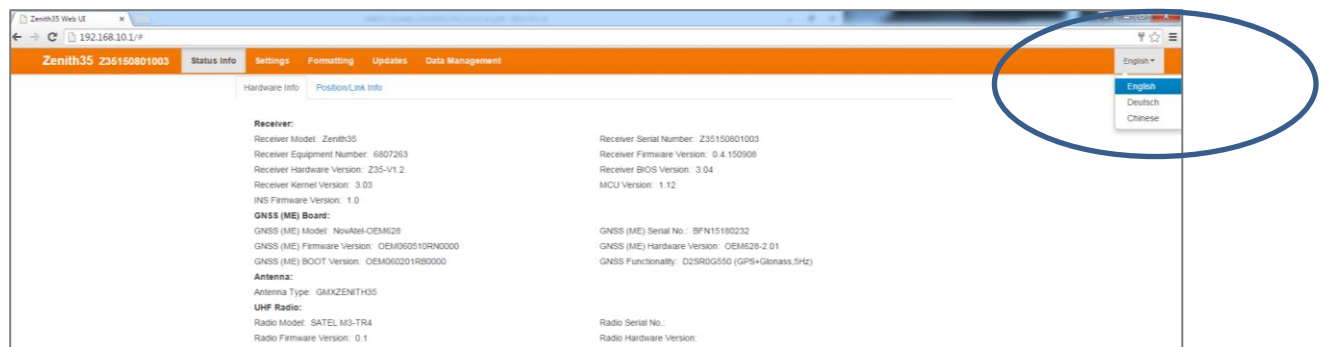
User name: admin

Password: password

After a successful login the start screen of the GeoMax Z35WebManager will appear.

3.5 CHANGE THE LANGUAGE OF THE GEOMAX Z35WEBMANAGER

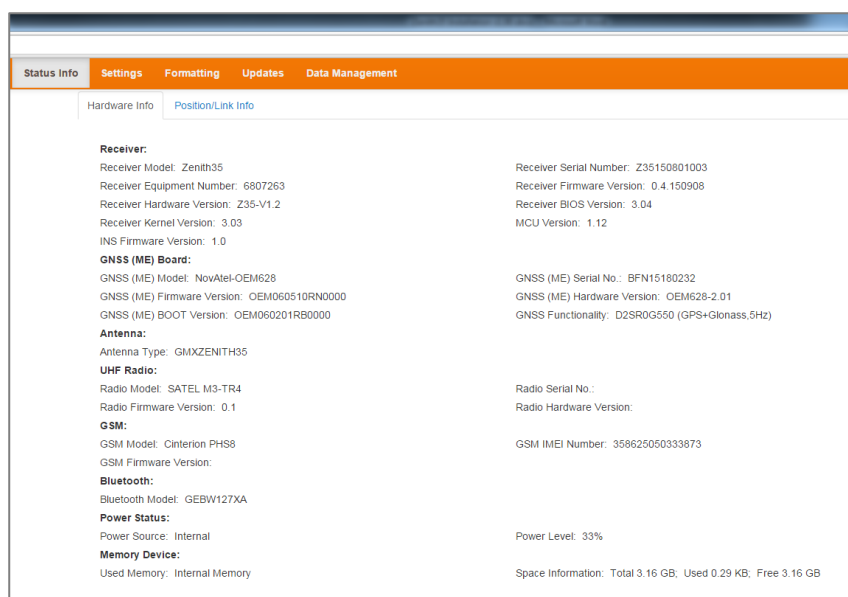
Go to the top-right corner in The GeoMax Z35WebManager and open the selection list to see the available languages (click on "English"). Once the preferred language is selected, the Z35WebManager will be automatically displayed in the chosen language.



3.6 FIRMWARE UPLOAD

3.6.1 Checking the receiver firmware version

Before using the receiver, it is recommended to check the current firmware version loaded on it. Once connected with GeoMax Z35WebManager, the installed firmware versions can be seen under the **Status Info** → **Hardware Info** tab.



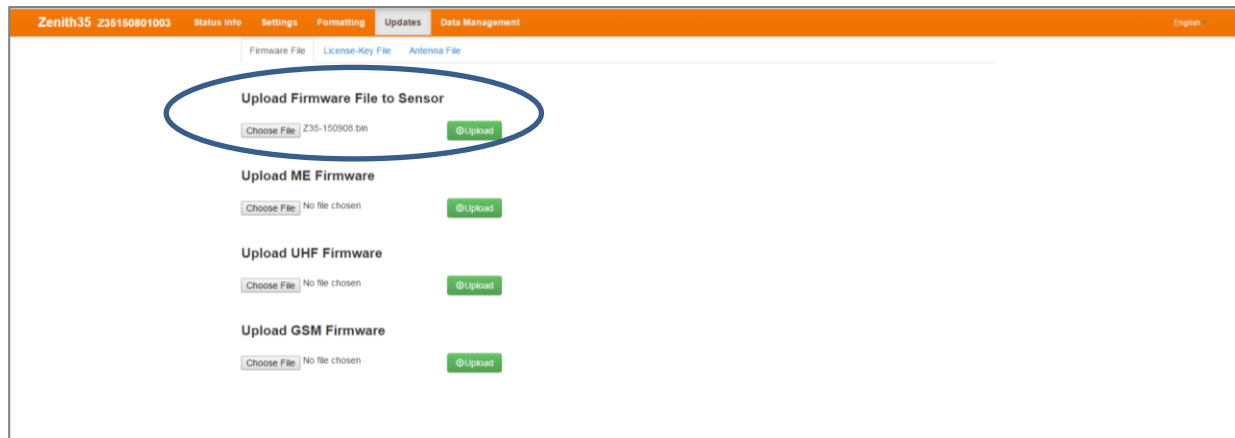
If the firmware is older than the one downloaded from the GeoMax download Area it is recommended to perform an update.

3.6.2 Retrieving latest firmware versions

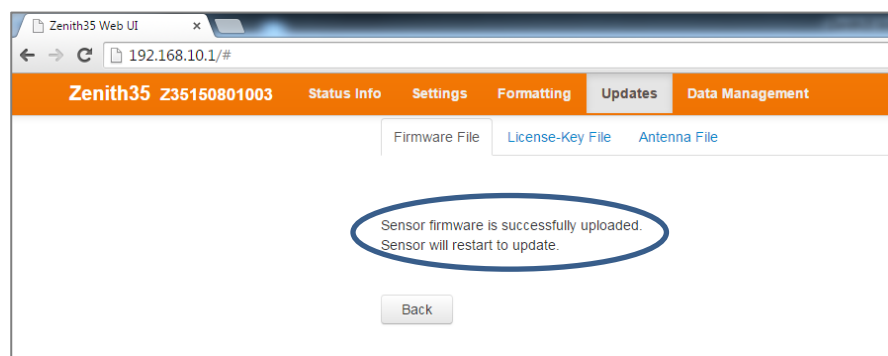
Visit the **GeoMax Positioning** website and select the **Downloads** option (<http://www.geomax-positioning.com/Downloads.htm>) to check for the current GNSS firmware versions. Download the latest firmware file and store it on your PC or WiFi-enabled device.

3.6.3 Zenith35 Pro Firmware update

If you need to update your receiver firmware, go to the “Updates” tab in GeoMax Z35WebManager. Click “Choose File” to browse to the latest firmware file on your PC and click “Upload”.



Accept the warning message about the battery power to start the firmware upload. Once the firmware is successfully uploaded, the Z35WebManager will prompt the user about the sensor restart to utilize the new firmware.



Please re-connect the receiver to the GeoMax Z35WebManager. The new firmware version should be displayed in the Hardware Info panel. To check please refer to chapter 3.6.1 “Checking the receiver firmware version”.

3.7 CHANGING THE UHF RADIO SETTINGS

To meet country radio licence requirements, the internal UHF radio must be set before use to legally allowed local frequencies as defined by local or governmental authorities. Use of forbidden frequencies may lead to prosecution and penalties.

The following procedure defines the configuration of the internal UHF radio. Go to **Settings** and select UHF as RTK Data Source. Once you click on **Advanced UHF Settings**, a password is required to enter. As soon as you enter the default password "config1234", the Internal Radio window is displayed, where up to 8 different frequencies can be configured. Check with your country specific local authorities, what frequencies and channel spacing may be used. At the Radio Settings field the internal radio can be configured with default channel, protocol type, channel spacing, Forward Error Correction and transmission power (in base mode). Please click **Save Settings** to update the defined radio configuration onto the receiver.

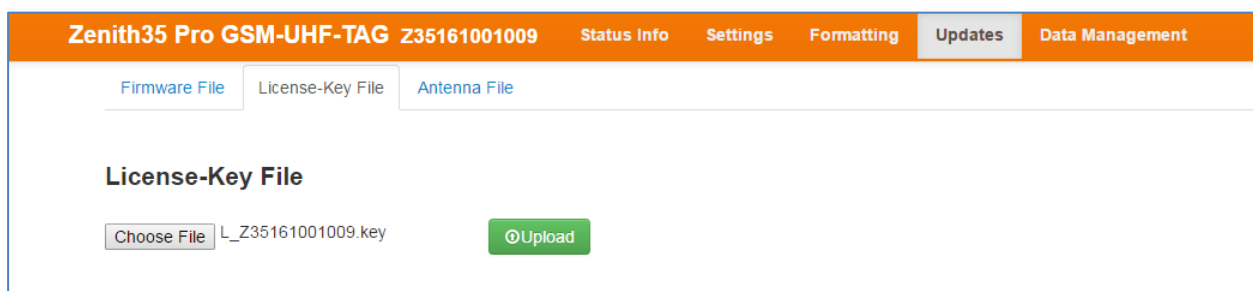
The screenshot displays the 'Advanced UHF Settings' window. At the top, there are tabs for 'Sensor Settings' and 'Satellite Settings'. Below these, the 'Working Mode' is set to 'Static', and 'RTK Data Source' is set to 'UHF'. The 'Antenna Height to ARP' is 0.000 m. 'RTK Quality Mode' is 'Normal', and 'Raw Data Logging' is 'Disable'. The 'Radio Channel' is set to 1, with a frequency of 433.95000 MHz. A button labeled 'Advanced UHF Settings' is visible. Below this, there are 16 channels for frequency configuration, with Channel 1 set to 433.95000 MHz and Channels 2 through 16 set to 0 MHz. A 'Restore Default Frequency' button is present. At the bottom, the 'Protocol' is 'TRIMTALK (P)', 'Channel Spacing' is 25, and 'FEC' is 'OFF'. There are 'Export' and 'Import' buttons for the 'Radio Configuration File'. A green 'Save Settings' button is at the bottom right.

3.8 INSTALLATION OF LICENCES

If optional receiver licenses are additionally ordered, they will not be activated before delivery. Therefore, when the equipment is first received, the optional licences still need to be loaded onto the receiver. These options are activated by means of a NovAtel Authorization code, which is embedded in a licence key file. The license key file is obtained via email upon delivery of the Zenith35 Pro. An example of the NovAtel Authorization code is:

“ZBBPB7,WJ73FJ,DMDC36,82BPJ4,8C8WN5,**CFN**RNNTBN” where the first 3 digits of the last part specifies the included functionality, as follows:

DFN RNNTBN	GPS, GLONASS, all Frequencies, 20 Hz
CFN RNNTBN	GPS, GLONASS, BeiDou, all Frequencies, 20 Hz
TFN RNNTBN	GPS, GLONASS, Galileo, all Frequencies, 20 Hz
FFN RNN5BN	GPS, GLONASS, BeiDou, Galileo, all Frequencies, 5 Hz
FFN RNNTBN	GPS, GLONASS, BeiDou, Galileo, all Frequencies, 20 Hz



The screenshot shows the web interface for the Zenith35 Pro GSM-UHF-TAG. The top navigation bar is orange and contains the following tabs: Zenith35 Pro GSM-UHF-TAG Z35161001009, Status Info, Settings, Formatting, Updates (highlighted), and Data Management. Below the navigation bar, there are three sub-tabs: Firmware File, License-Key File (selected), and Antenna File. The main content area is titled "License-Key File" and contains a "Choose File" button next to the text "L_Z35161001009.key" and an "Upload" button.

The licence key file can be installed onto the receiver by using GeoMax Z35WebManager. With the receiver connected to the GeoMax Z35WebManager, select option **Updates** → **License-Key File**. Choose the key file (for example *L_xxx.key* where *xxx* is the receiver serial number) and click **Upload**. A confirmation message will be shown once the option has been activated.

Note:

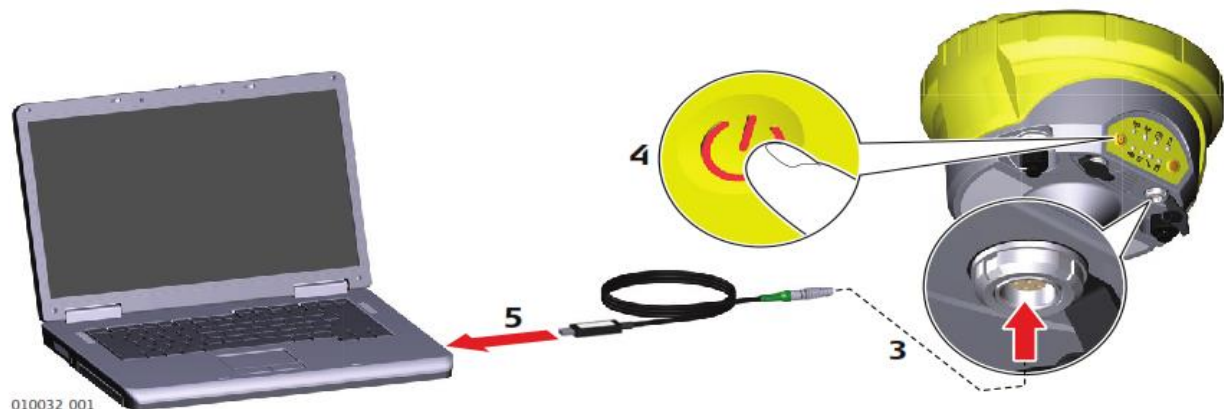
- A manual entry of the license key is **NOT** supported. The files must be uploaded!

3.9 DISCONNECTING FROM THE PC

Once the receiver configuration is complete, it can be disconnected from the PC. Simply close your GeoMax Z35WebManager and disconnect the WiFi-connection.

3.10 CONNECTING TO THE PC VIA USB

Plug the included cable into the port of the sensor. Turn on your sensor. Plug the cable into the USB port of your PC. The driver will be installed automatically.

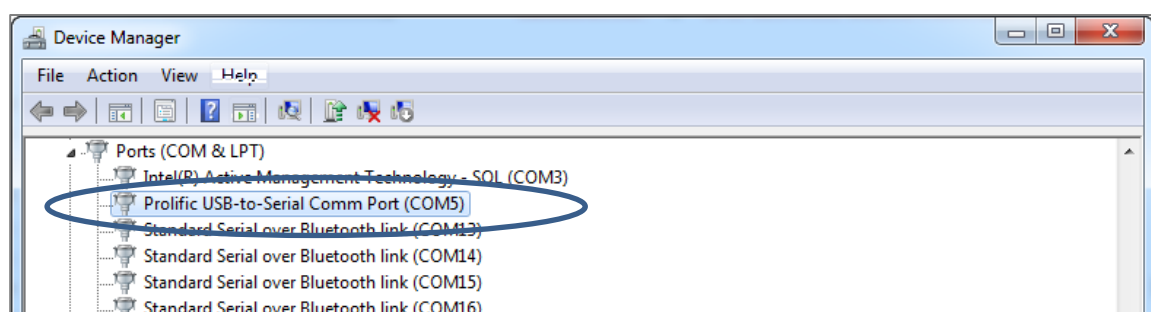


After the successful installation your hardware can be used as a mass storage device. Files can now be uploaded and/or downloaded to the Zenith35 Pro.

3.11 CONNECTING TO THE PC VIA RS232

Plug the included cable into the port of the sensor. Turn on your instrument. Plug the cable into the RS232 port of your PC. The driver will be installed automatically.

The assigned COM port number can be checked on the PC by selecting **START** → **Control Panel** → **Device Manager**. In the Ports (COM & LPT) category, look for the used COM port number or e.g. *Prolific USB-to-Serial* if you are using a converter. Here the COM port number of the USB port is provided, as shown in the example below (COM5). Please remember the displayed COM port assigned to your receiver.



The COM Port defaults are Baudrate 115`200, 8 databits, 1 Stopbit, Parity None.

4 PREPARATION OF THE HANDHELD

4.1 SETTING UP WINDOWS MOBILE

Once the battery is fully charged or while connected to AC power, press the power button

of the handheld. Follow the steps of the wizard to setup Windows Mobile. The Windows Mobile software on the supplied Zenius5 is only available in English language. Microsoft restricts the installation of alternative languages with this operating system.

4.2 CONNECTING TO THE PC

To establish communication between the handheld and your PC, the Windows Mobile Device Centre needs to be installed. For Windows XP the communication software Microsoft ActiveSync is required. This software can be downloaded from Microsoft's website. After the software installation, connect the handheld to your PC with the USB cable supplied with the device as shown below.



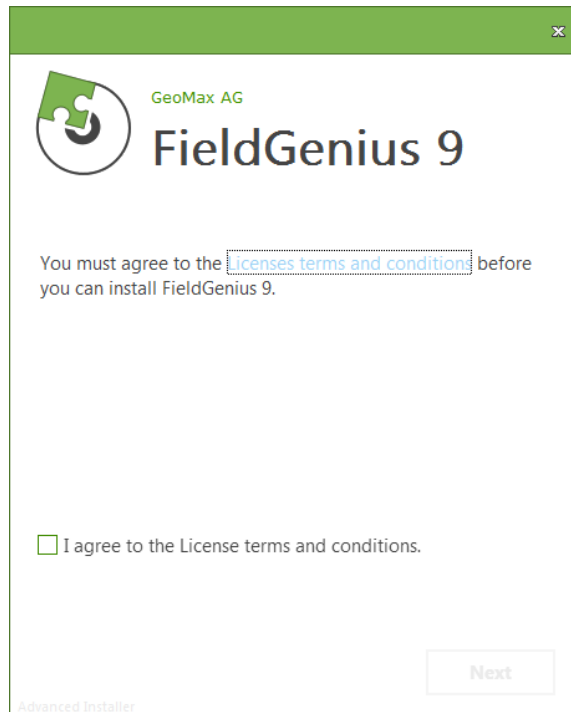
The device drivers will now automatically be installed. If the Windows **Found New Hardware Wizard** starts, click the Close button. After the drivers are installed, the Mobile Device Centre or ActiveSync will automatically start. The contents of the internal memory can be seen with Windows Explorer and are defined as a drive named **Portable Device**.

4.3 INSTALLATION OF GEOMAX FIELDGENIUS/ LAYOUT PRO

Download the latest version of GeoMax FieldGenius/Layout Pro from GeoMax Website at <http://www.geomax-positioning.com/Downloads.htm?cid=15613>

Here the latest installation version and Release Notes of GeoMax FieldGenius/Layout Pro is available. Download the *Devices Installation* and save onto your PC.

With the handheld connected to your PC, run the installer file *geomax-fieldgenius-devices-v.v.v.v-xxu.exe* where *v.v.v.v* is the version number and *xx* the language. The PC will attempt to connect to the handheld and install the FieldGenius/ Layout Pro software. Follow the instructions of the Windows installation wizard. At the Device Selection window, select the data collector type as **Windows Mobile 6.1 to 6.5 or higher**.

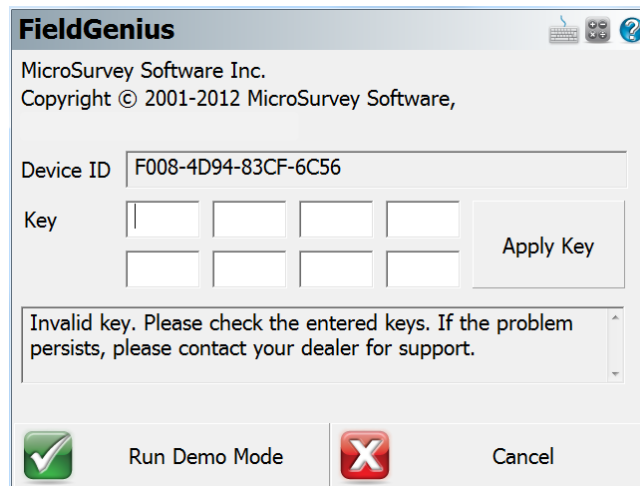


When prompted by the handheld for where to install, choose **Device**. Once the installation process is completed, the FieldGenius/ Layout Pro software can be started by selecting it from the Windows Mobile Start Menu.

4.4 REGISTRATION OF FIELDGENIUS/ LAYOUT PRO

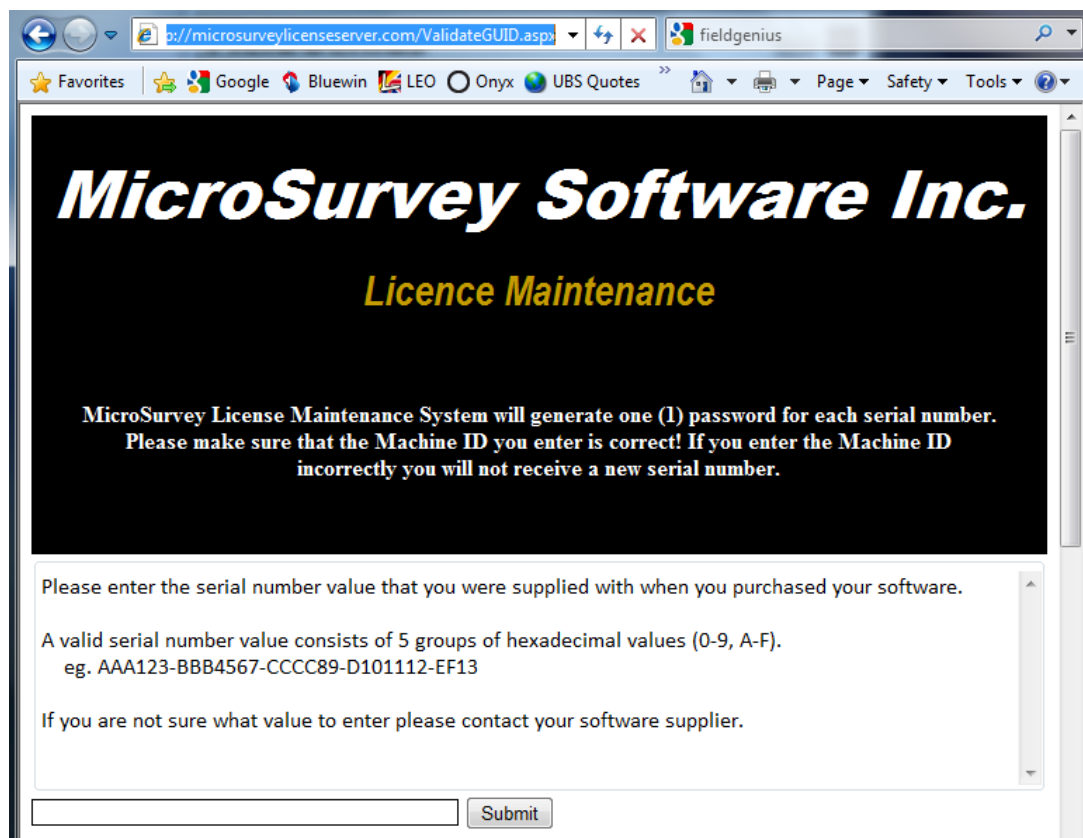
When FieldGenius/Layout Pro is started, a registration window with the Device ID is displayed as shown below. It is possible to use FieldGenius/Layout Pro without registration by tapping **Run Demo Mode**. This provides full functionality, but is limited to the storage of 30 points.

To register your version of FieldGenius/ Layout Pro, an activation key needs to be entered. The displayed Device ID together with the GUID (**G**lobal **U**nique **I**Dentity) is used to obtain the key. The GUID can be found on the printed FieldGenius/ Layout Pro card that was supplied together with your Zenith35 Pro equipment.



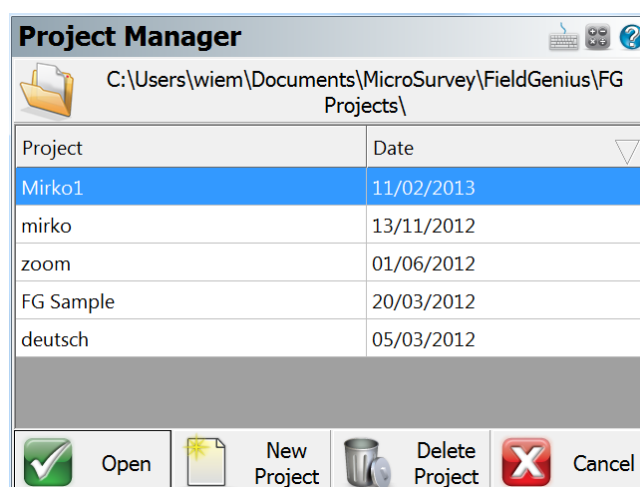
The activation key can be generated by using MicroSurvey's webportal, at the link <http://microsurveylicenseserver.com/ValidateSerialNumber.aspx>. This webportal is shown in the screenshot below. At the blank serial number field, enter your GUID and click **Submit**. At the next screen, enter the Device ID shown on the handheld. The activation key will then be displayed in the password field. Enter this key into the handheld at the provided fields and click **Apply Key**.

Note: Please make certain that the Device ID is entered correctly first time, since an activation key cannot be generated again with a different ID.



4.5 CONNECTION TO THE GNSS RECEIVER

When starting FieldGenius, the *Project Manager* screen is displayed each time. Create a new project by tapping the appropriate icon and enter a project name. The onscreen keyboard can always be accessed by double tapping on the editable field. The screens that follow are used to set the default settings for this project.



At the *Instrument Selection* screen that follows, a connection to the receiver can be made. Ensure that the receiver is switched on and select either **GPS Rover** or **GPS Reference**. In the Instrument Profile window, tap Add and enter a name for your receiver. Save the name and then tap Edit to configure the profile.

Instrument Selection

Instrument Type

☐ Total Station ☒ GNSS Rover
☐ Total Station Demo ☐ GNSS Reference
☐ None ☐ GNSS Demo

Instrument Profile

Zenith35 Pro

Add Delete Edit

Profiles contain equipment settings and measurement tolerances.

☐ Always Auto-Reconnect

Connect Close

To ensure that measured heights are computed correctly, it is important to define the receiver type. At the *Antenna Height* panel, choose the Model as **Zenith35 Pro**. The Measured Height is the default length of the telescopic pole.

Antenna Height

Model

Zenith35Pro

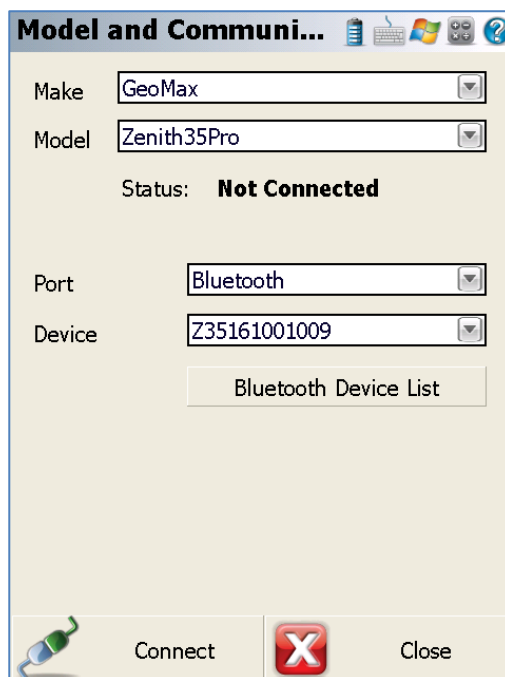
Measured Height

1.800m

Measure Point

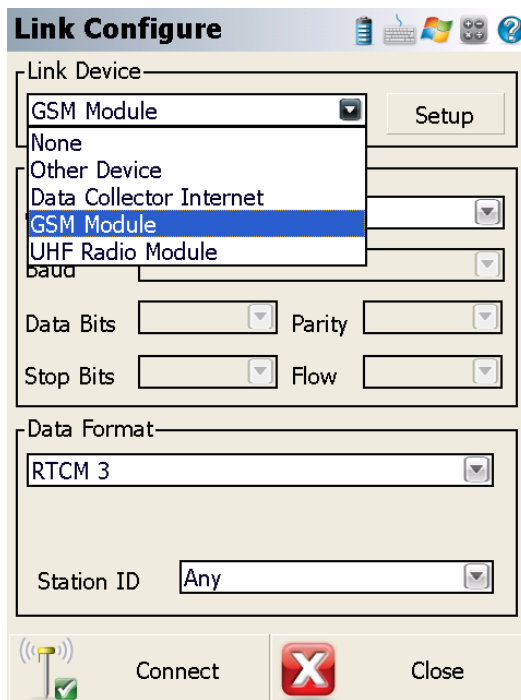
Bottom of antenna mount

At the *Model & Communication* panel, select the Make as **GeoMax**, Model as **Zenith35 Pro** and Port as **Bluetooth**. Tap Bluetooth Search to find all available devices and choose the required receiver by its serial number.



The *Link Configure* panel is displayed next. In the *Link Device* field, the following choices are available:

- **None:** Continue without any link device
- **Other Device:** When connecting an external radio by cable
- **Data Collector Internet:** To receive RTK data using the Field Controllers GSM or MiFi device
- **GSM Module:** For network rover using the internal GSM
- **UHF Radio Module:** When using the internal radio with base or rover mode



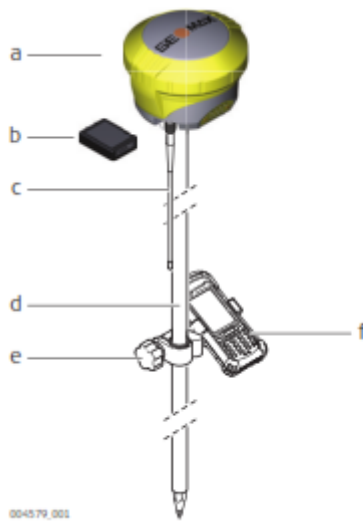
Set the Data Format with the required RTK base message type. When selecting **GSM Module** or **Data Collector Internet**, tap Setup to define the NTRIP parameters. Once an internet connection is established, a suitable mountpoint can be selected.

When everything has been configured as required, tap Connect. The map view is shown next and you are ready to measure. For further information on using FieldGenius/ Layout Pro for GNSS measurements, refer to the FieldGenius/ Layout Pro instruction manual in the GPS REFERENCE chapter.

5 EQUIPMENT SETUP

5.1 ROVER SETUP

For a RTK rover, the Zenith35 Pro equipment can be setup on a pole as shown below.



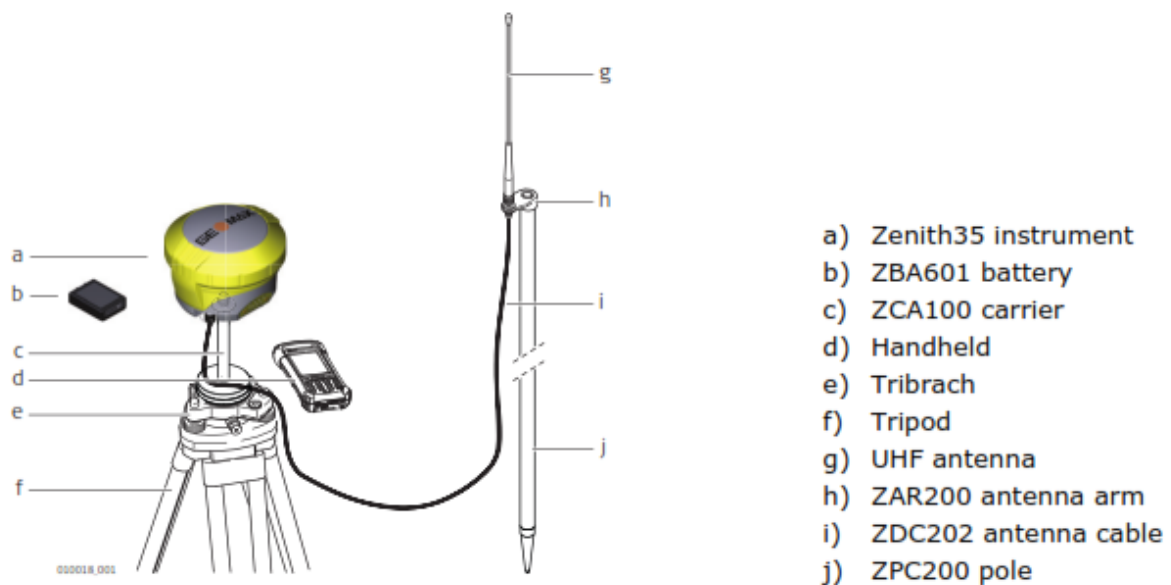
- a) Zenith35 instrument
- b) ZBA601 battery
- c) UHF antenna
- d) ZPC200 pole
- e) ZHR200 holder
- f) Handheld

When working with the UHF radio, ensure the correct frequency and protocol are set as described in section 3.8. Attach a radio antenna suitable for the set frequency. The following UHF antennas can be ordered from GeoMax:

760259	ZRA100, Gainflex UHF Antenna - frequency range 435-470 MHz
766906	ZRA101, Gainflex UHF Antenna - frequency range 400-435 MHz.

5.2 BASE SETUP

The Zenith35 Pro equipment can also be setup as a base station for the transmission of RTK corrections as shown below.



Attach the UHF radio antenna to the 760275 ZAR200 antenna arm. The arm has a 5/8" thread for mounting onto a telescopic pole or a tripod setup with threaded carrier. The antenna is connected to the Zenith35 Pro using the 760266 ZDC202 cable. The required RTK output message can be configured using GeoMax Assistant or FieldGenius.

For long range RTK, a high powered radio can be used at the base station. Available from GeoMax is the 789359 Satel EASyPro 35W radio. This radio is connected to the receiver and an external power supply, with the 792382 ZDC221 cable. The cable needs to be connected to the Lemo port of the receiver. When other UHF radio types are used, a suitable cable needs to be obtained from the respective radio supplier.